

fully automatic AED Papercraft template


Attention

Recommended age : 8 years old and above

- Ⓢ If a child makes the papercraft, an adult must make it together with them and give appropriate caution and guidance.
- Ⓢ When handling scissors, a utility knife, sharp objects, paper, etc., be careful not to get injured.
- Ⓢ We are not responsible for any injuries or accidents caused by using this product.
- Ⓢ This papercraft has some differences from the real AED so that children can easily assemble it.
- Ⓢ The papercraft does not have any functions of a real AED such as sounds or lights.




Ⓢ About various symbols

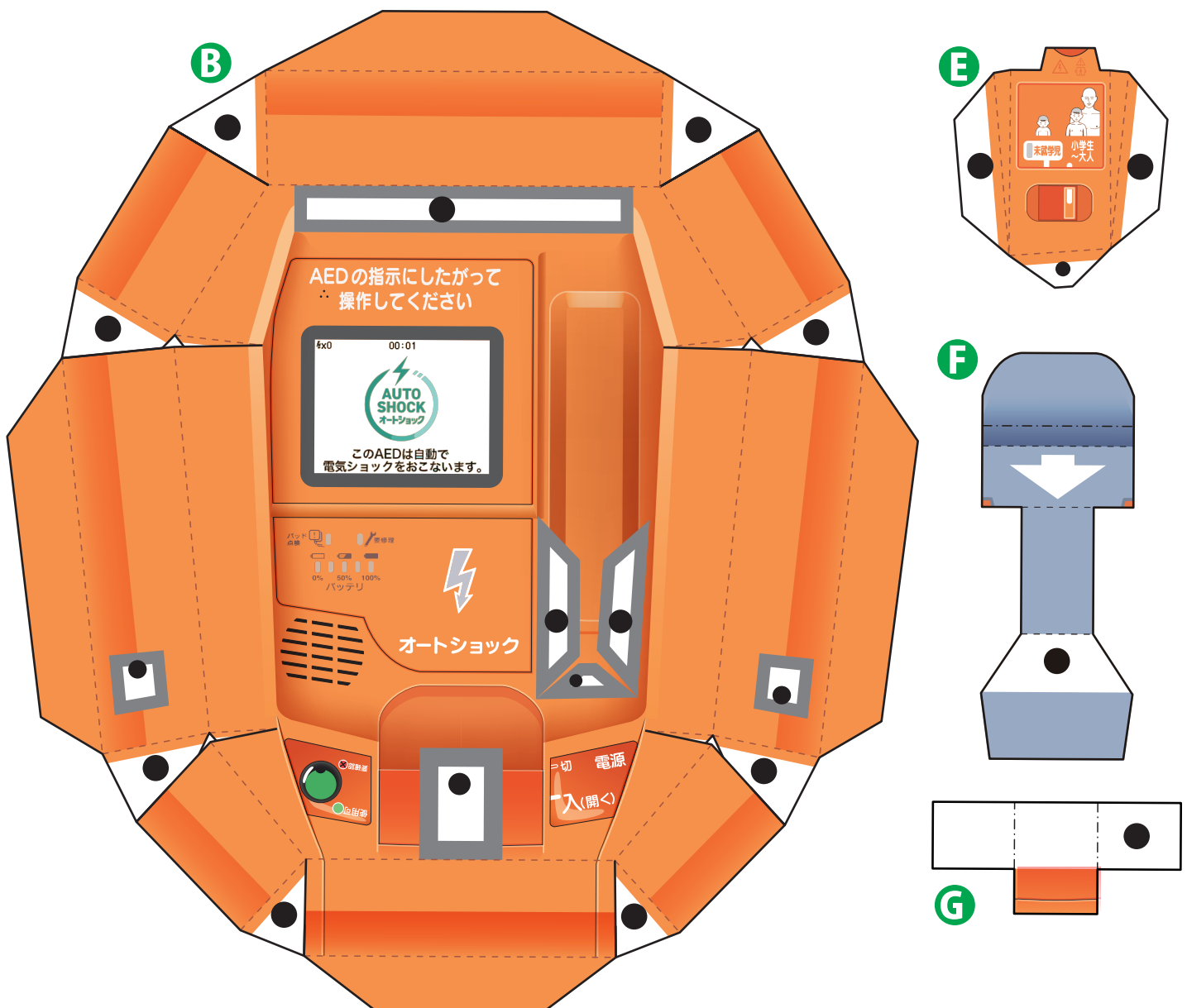
- - - - - valley fold line
- - - - - mountain fold line
- cut line
-  tab to glue

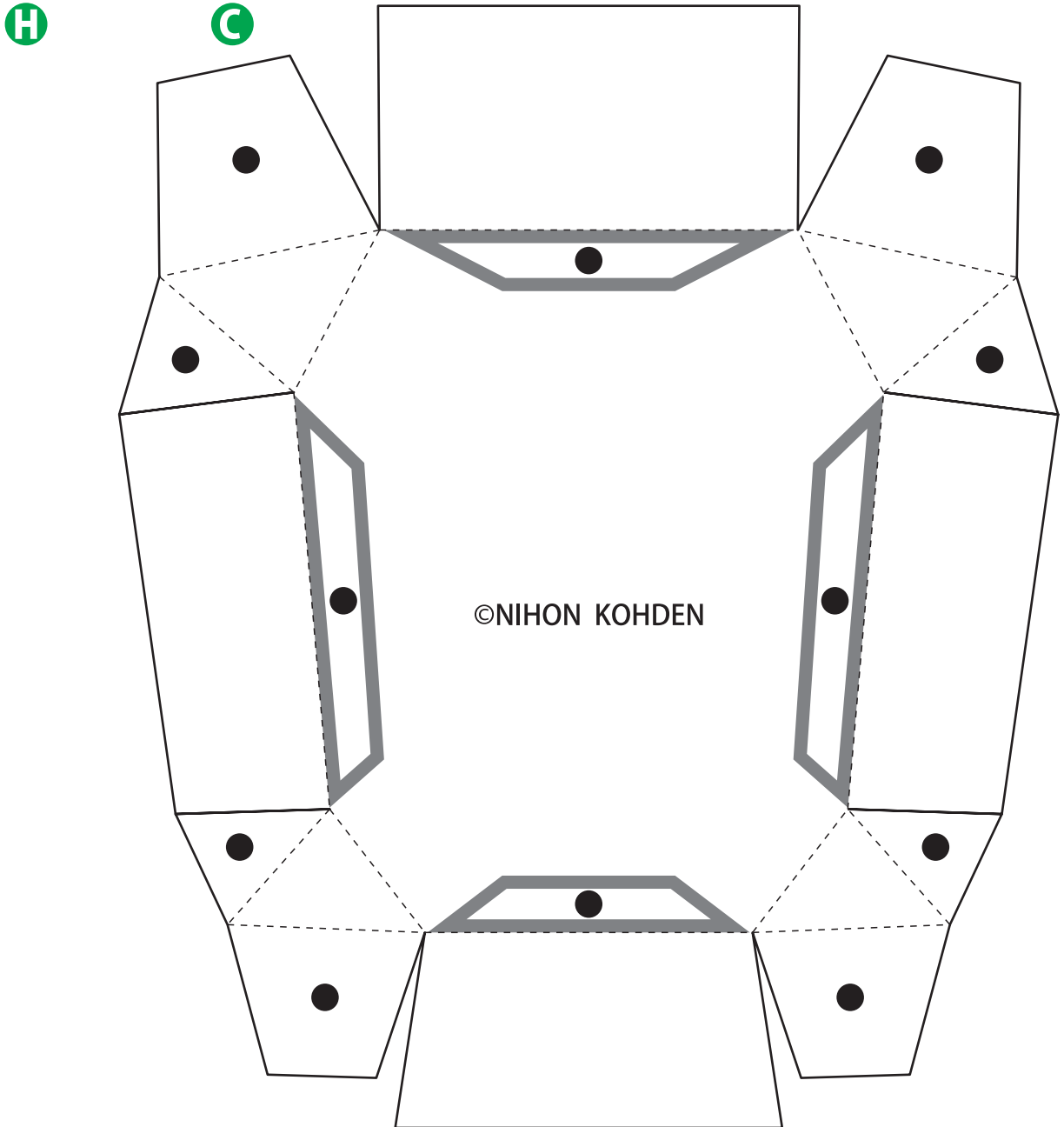
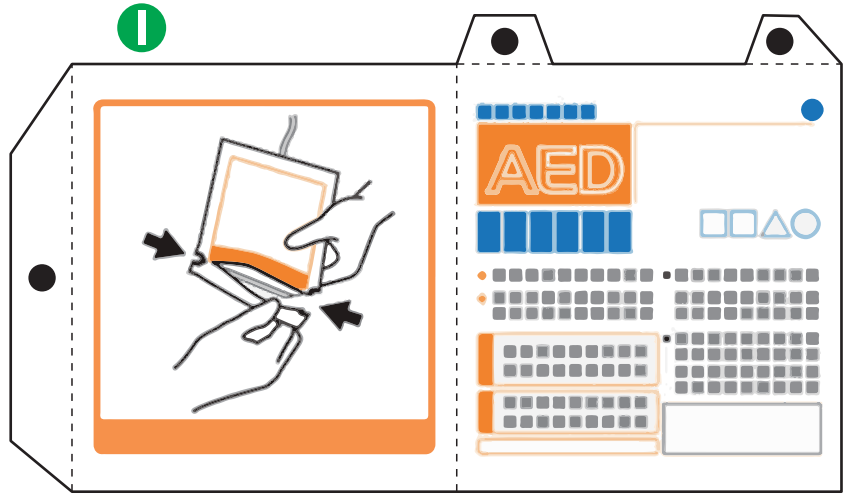
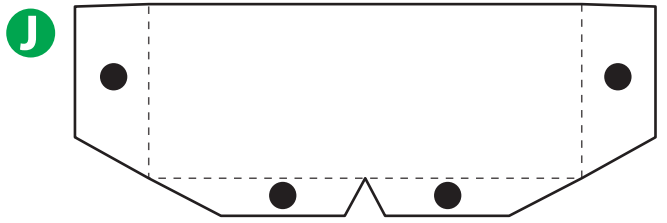
Ⓢ About printouts at home

- Paper with a thickness of about 0.2 mm is suitable. (Thin paper such as copy paper is not recommended.)
- If you want to output the assembly instructions, you can use ordinary copy paper.
- When printing, set the magnification when printing with PDF viewing software to 100%.
- Prepare the required number of sheets and be careful not to miss any prints.

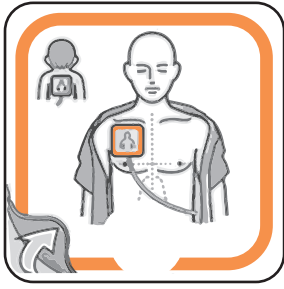
 Glue these tabs

 The tabs surrounded by gray are glued to the external parts.





M



A

N

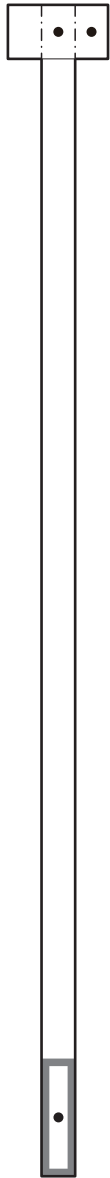


©NIHON KOHDEN

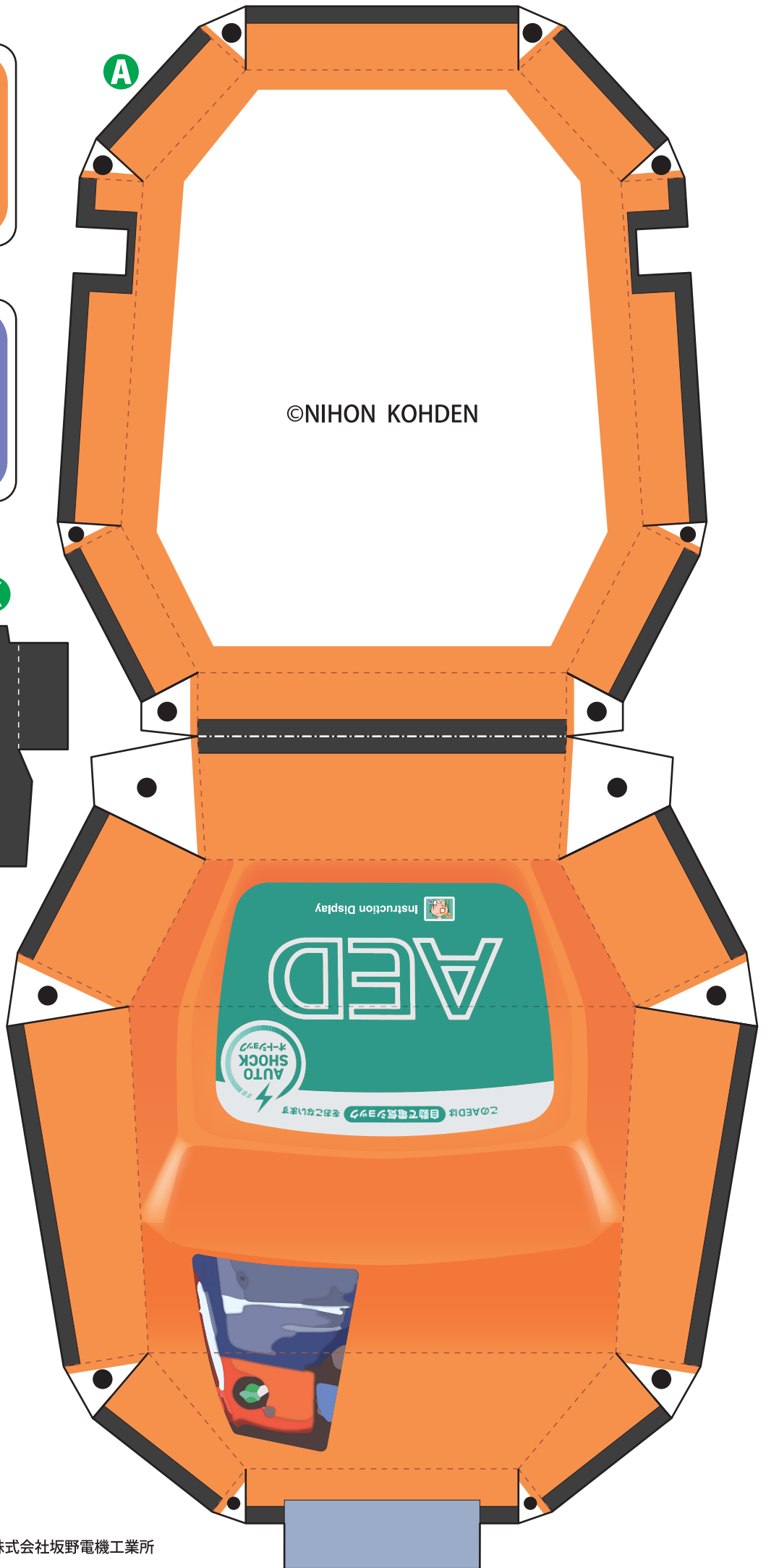
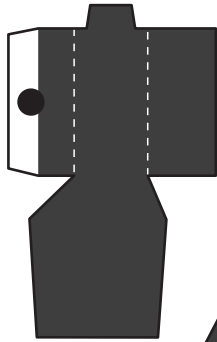
L-1

L-3

L-2



K



■ペーパークラフト設計:ハルト(紙乃製作所)

■本ペーパークラフトに関するお問い合わせ先:株式会社坂野電機工業所
(担当者:坂野 恭介)info@sakano-denki.com