

# fully automatic AED

## How to make the papercraft



### Attention

Recommended age : 8 years old and above

Page ①

- ◎ If a child makes the papercraft, an adult must make it together with them and give appropriate caution and guidance.
- ◎ When handling scissors, a utility knife, sharp objects, paper, etc., be careful not to get injured.
- ◎ We are not responsible for any injuries or accidents caused by using this product.
- ◎ This papercraft has some differences from the real AED so that children can easily assemble it.
- ◎ The papercraft does not have any functions of a real AED such as sounds or lights.

### ◎ Tools to prepare in advance



scissors

If you are an adult, a cutter is recommended.



glue

A quick-drying type of woodworking bond is recommended.



ruler

It is used to make creases. Make a mark on the fold line with a ballpoint pen.



ballpoint pen that cannot write

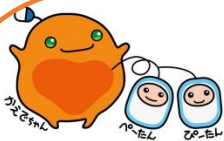
If you are an adult, using the side of the cutter blade is recommended.

### ◎ About various symbols

- valley fold line
- - - - - mountain fold line
- cut line
- ● tab to glue

### ◎ About printouts at home

- Paper with a thickness of about 0.2 mm is suitable. (Thin paper such as copy paper is not recommended.)
- If you want to output the assembly instructions, you can use ordinary copy paper.
- When printing, set the magnification when printing with PDF viewing software to 100%.
- Prepare the required number of sheets and be careful not to miss any prints.



### STEP 1

Do the preparations to make it fast and nicely!

#### Preparation ①

Prepare scissors and cut the paper into pieces!

Use scissors to cut the cut lines of all the parts in the template.



#### Preparation ②

Make fold lines for mountain folds and valley folds!

Place a ruler on the mountain fold line and valley fold line and make a fold line with a ballpoint pen that cannot write.



Image of completed model



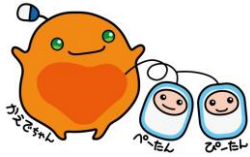
Now you are ready!

- \* There is no problem if you cut off each part and make a crease while watching the creation procedure.
- \* Please be assured that the part number is written on the photo in the creation procedure to prevent the part number from being cut off and lost.

© Papercraft devised by: Kaminoseisakusho Haruto (Hiroaki Kawamura)

© Contact here for inquiries regarding this papercraft

→ Sakanodenkikougyouso Co., Ltd. Q&AED Activities (manager: Kyosuke Sakano) sakano-denki@cpost.plala.or.jp



**STEP2**

**Assemble the large parts first with glue!**



Glue these tabs



The tabs surrounded by gray are glued to the external parts.

**1 Assemble part ① to make the AED cover.**

Take Part A in your hand, apply glue to the tabs, and glue them one by one to the back of the cover.



Image after gluing is completed

**2 Assemble part ② to make the upper part of the AED body.**

Glue part B of the AED body together in the same way as ①.



Image after gluing is completed

**3 Assemble part ③ to make the lower part of the AED body.**

Apply glue to the tabs on part C other but not the gray tabs, and glue the tabs to the back of the AED body one by one.



Image after gluing is completed

**4 Join the upper and lower parts of the main body assembled in ② and ③ together.**

Glue the upper part of the main body made in ② to the gray tabs of ③.



Image after gluing is completed

**5 Assemble part ⑤ to make the Preschool child / Elementary school student to adult mode selector switch**

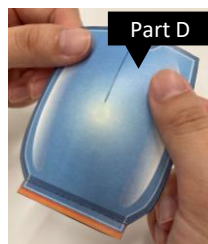
After applying glue to the tabs on part E, glue them to the gray tabs on the main body made in ①.



Image after gluing is completed

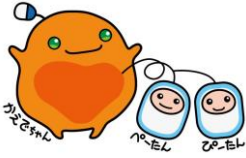
**6 Assemble part ④ to complete the main body lid!**

After placing glue on the tab of part D, make a valley fold and glue the tab to the main body made in ④.



Bonding by valley fold

Image after gluing is completed



## STEP3

There will be more detailed work, so don't panic and be careful!



Glue these tabs



The tabs surrounded by gray are glued to the external parts.

## 7 Glue part ⑧ to the main body to make a handle for the AED main body.

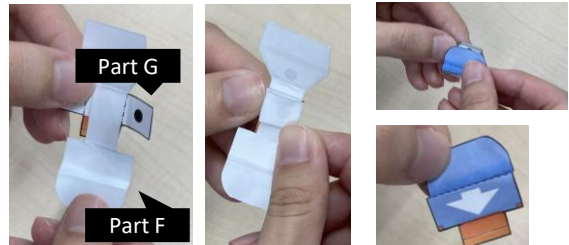
Take part H and glue it to the gray tabs on either side of the main body made in ⑥.



Image after gluing is completed

## 8 Assemble part ⑥ with part ⑦ in between.

Wrap part F around part G and glue it shut. Then fold and glue part F.



Turn F over and wrap it around G.

Fold G.

Fold F and glue it together.

## 9 After gluing the slide button made in ⑧ to the main body, the main body is finally complete!

Glue the button made in ⑧ to the gray tab of the main body made in ⑦ and close the lid.



Switch made in ⑧

## 10 Assemble part ① to complete the pads storage pocket!

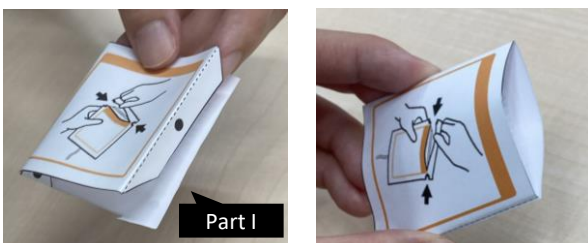
Glue part J to the back of the lid of the main body made in ⑨ to make a pocket to store the pads.



Image after gluing is completed

## 11 Assemble part ① to create a pocket to put the pad bodies in.

After gluing the tab on part I to the back of the pocket, the pads storage pocket is complete!

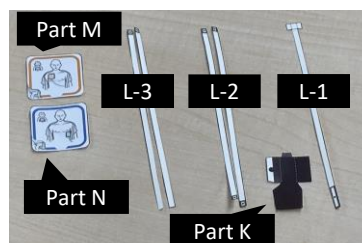


Part I

image after gluing is completed

## 12 Prepare part ①, part ①, part ①, part ①.

Part L consists of 1 [L-1], 2 [L-2], and 2 [L-3]. Understand the differences between each part.

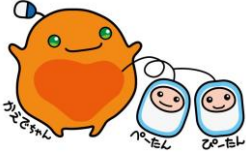


Part M

Part N

Part K

<How to distinguish different parts>  
L-1: The upper part is T-shaped.  
L-2: There are gray tabs on both ends.  
L-3: There is a gray tab on the top.



## STEP4

Last spurt! The AED will be completed soon!



Glue these tabs



The tabs surrounded by gray are glued to the external parts.

## 13 Wrap part ㊀ around part [L-1].

Glue the gray tab of L-1 to part K, fold in part K, and glue and pinch it together.

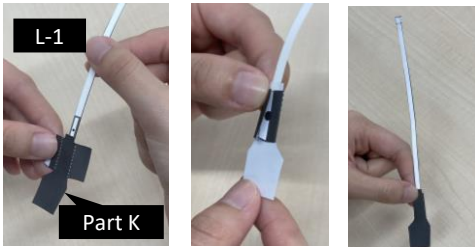


Image after gluing is completed

## 14 Connect more lines to the line made in [13].

Hold the two L-2 parts with the tabs pointing up, connect them to the T-shaped section of part L-1. Then, fold and glue them together.

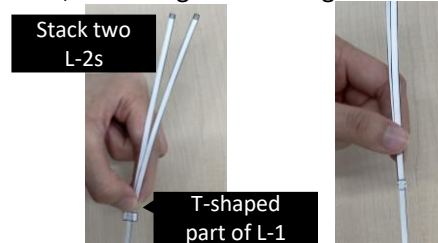
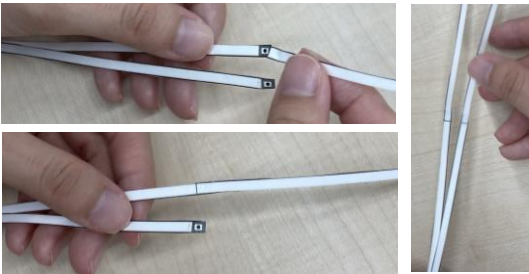


Image after gluing is completed

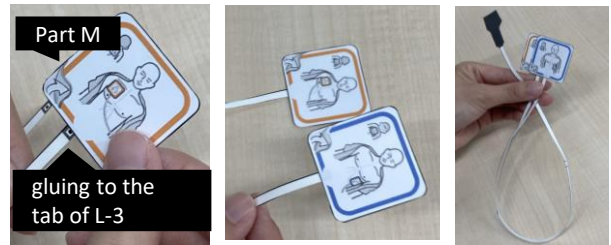
## 15 Connect more lines to the line created in [14].

Glue the two L-3 parts that do not have a tab to the gray tab of part L-2.



## 16 Glue each pad to the line made in [15].

Glue the pads of part M and part N to the tab of part L-3.

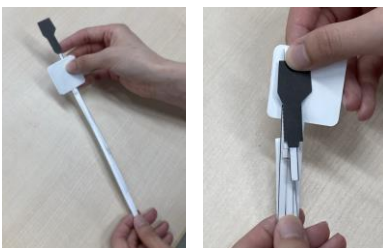


Glue part M in the same way.

Image after gluing is complete

## 17 Fold the pad body made in [16] for storage in the storage pocket.

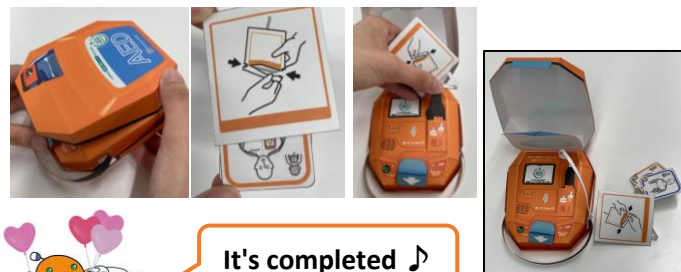
Fold the part K in a pattern according to the pad.



It's OK if it's folded small!

## Complete !

Put the main body in the cover made in [1]. Store [16] in the bag made in [11], connect the black connector part of the pad to the gap above the mode selector switch of the main body. Finally the AED is completed!



It's completed 🎵