

# fully automatic AED

## How to make the papercraft



### Attention

Recommended age : 8 years old and above

Page ①

- ◎ If a child makes the papercraft, an adult must make it together with them and give appropriate caution and guidance.
- ◎ When handling scissors, a utility knife, sharp objects, paper, etc., be careful not to get injured.
- ◎ We are not responsible for any injuries or accidents caused by using this product.
- ◎ This papercraft has some differences from the real AED so that children can easily assemble it.
- ◎ The papercraft does not have any functions of a real AED such as sounds or lights.

### ◎ Tools to prepare in advance



scissors

If you are an adult, a cutter is recommended.



glue

A quick-drying type of woodworking bond is recommended.



ruler

It is used to make creases. Make a mark on the fold line with a ballpoint pen.



ballpoint pen that cannot write

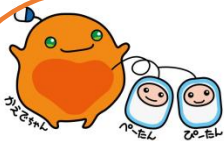
If you are an adult, using the side of the cutter blade is recommended.

### ◎ About various symbols

- valley fold line
- - - - - mountain fold line
- cut line
- ● tab to glue

### ◎ About printouts at home

- Paper with a thickness of about 0.2 mm is suitable. (Thin paper such as copy paper is not recommended.)
- If you want to output the assembly instructions, you can use ordinary copy paper.
- When printing, set the magnification when printing with PDF viewing software to 100%.
- Prepare the required number of sheets and be careful not to miss any prints.



### STEP 1

Do the preparations to make it fast and nicely!

#### Preparation ①

Prepare scissors and cut the paper into pieces!

Use scissors to cut the cut lines of all the parts in the template.



#### Preparation ②

Make fold lines for mountain folds and valley folds!

Place a ruler on the mountain fold line and valley fold line and make a fold line with a ballpoint pen that cannot write.



Image of completed model



Now you are ready!

- \* There is no problem if you cut off each part and make a crease while watching the creation procedure.
- \* Please be assured that the part number is written on the photo in the creation procedure to prevent the part number from being cut off and lost.

© Papercraft devised by: Kaminoseisakusho Haruto (Hiroaki Kawamura)

© Contact here for inquiries regarding this papercraft

→ Sakanodenkikougyouso Co., Ltd. Q&AED Activities (manager: Kyosuke Sakano) sakano-denki@cpost.plala.or.jp



**STEP2**

**Assemble the large parts first with glue!**



Glue these tabs



The tabs surrounded by gray are glued to the external parts.

**1 Assemble part ① to make the AED cover.**

Take Part A in your hand, apply glue to the tabs, and glue them one by one to the back of the cover.



Image after gluing is completed

**2 Assemble part ② to make the upper part of the AED body.**

Glue part B of the AED body together in the same way as ①.

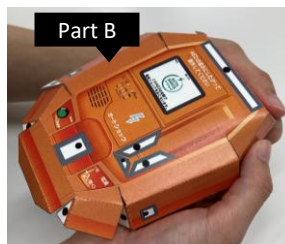


Image after gluing is completed

**3 Assemble part ③ to make the lower part of the AED body.**

Apply glue to the tabs on part C other but not the gray tabs, and glue the tabs to the back of the AED body one by one.



Image after gluing is completed

**4 Join the upper and lower parts of the main body assembled in ② and ③ together.**

Glue the upper part of the main body made in ② to the gray tabs of ③.



Image after gluing is completed

**5 Assemble part ⑤ to make the adult / pediatric mode selector switch**

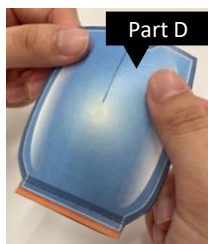
After applying glue to the tabs on part E, glue them to the gray tabs on the main body made in ①.



Image after gluing is completed

**6 Assemble part ④ to complete the main body lid!**

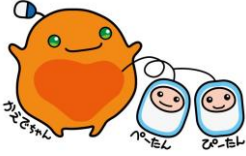
After placing glue on the tab of part D, make a valley fold and glue the tab to the main body made in ④.



Bonding by valley fold



Image after gluing is completed



**STEP3**

**There will be more detailed work, so don't panic and be careful!**



Glue these tabs



The tabs surrounded by gray are glued to the external parts.

**7** Glue part **H** to the main body to make a handle for the AED main body.

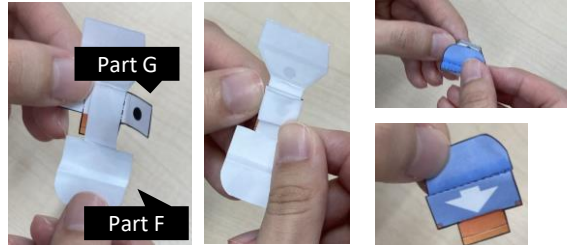
Take part H and glue it to the gray tabs on either side of the main body made in **6**.



Image after gluing is completed

**8** Assemble part **G** with part **F** in between.

Wrap part F around part G and glue it shut. Then fold and glue part F.



Turn F over and wrap it around G.

Fold G.

Fold F and glue it together.

**9** After gluing the slide button made in **8** to the main body, the main body is finally complete!

Glue the button made in **8** to the gray tab of the main body made in **7** and close the lid.



Switch made in **8**

**10** Assemble part **J** to complete the pads storage pocket!

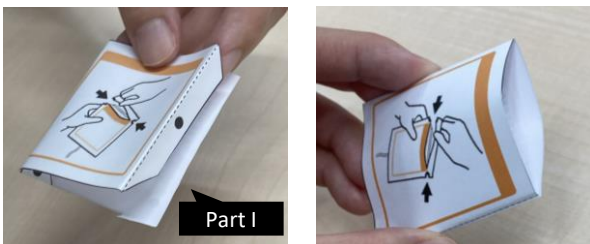
Glue part J to the back of the lid of the main body made in **9** to make a pocket to store the pads.



Image after gluing is completed

**11** Assemble part **I** to create a pocket to put the pad bodies in.

After gluing the tab on part I to the back of the pocket, the pads storage pocket is complete!

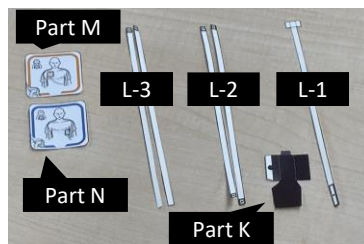


Part I

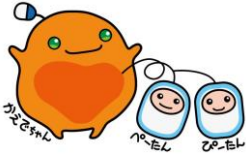
image after gluing is completed

**12** Prepare part **M**, part **N**, part **L**, part **K**.

Part L consists of 1 [L-1], 2 [L-2], and 2 [L-3]. Understand the differences between each part.



<How to distinguish different parts>  
 L-1: The upper part is T-shaped.  
 L-2: There are gray tabs on both ends.  
 L-3: There is a gray tab on the top.



# STEP4

## Last spurt! The AED will be completed soon!



Glue these tabs



The tabs surrounded by gray are glued to the external parts.

### 13 Wrap part ㊦ around part ㊥-1.

Glue the gray tab of L-1 to part K, fold in part K, and glue and pinch it together.

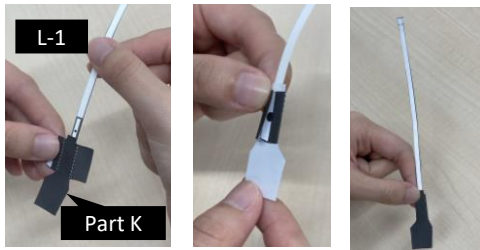


Image after gluing is completed

### 14 Connect more lines to the line made in 13.

Hold the two L-2 parts with the tabs pointing up, connect them to the T-shaped section of part L-1. Then, fold and glue them together.

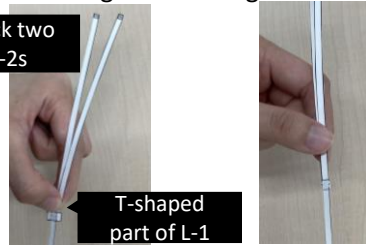
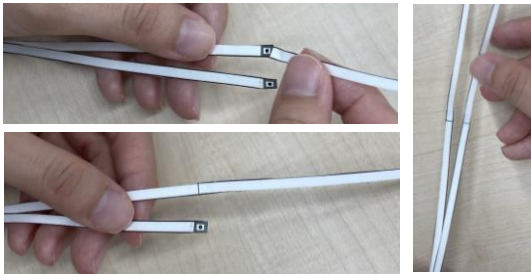


Image after gluing is completed

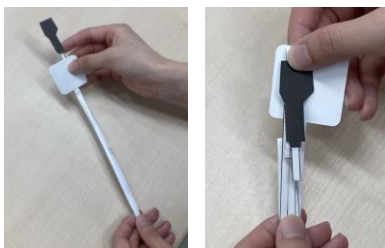
### 15 Connect more lines to the line created in 14.

Glue the two L-3 parts that do not have a tab to the gray tab of part L-2.



### 17 Fold the pad body made in 16 for storage in the storage pocket.

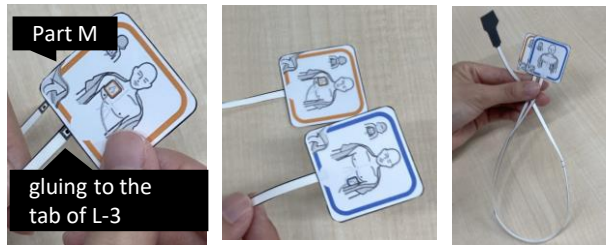
Fold the part K in a pattern according to the pad.



It's OK if it's folded small!

### 16 Glue each pad to the line made in 15.

Glue the pads of part M and part N to the tab of part L-3.

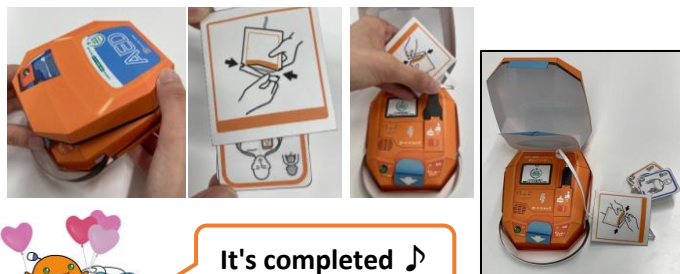


Glue part M in the same way.

Image after gluing is complete

## Complete !

Put the main body in the cover made in 1. Store 16 in the bag made in 11, connect the black connector part of the pad to the gap above the adult / pediatric mode selector switch of the main body. Finally the AED is completed!



It's completed 🎵